

Check valves type B

These check valves type B are available in three housing designs enabling in-line installation for any requirement.

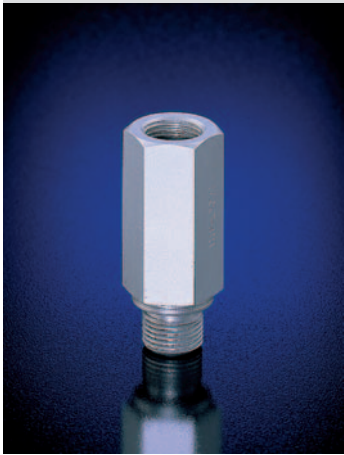
It is also possible to use these valves as foot valves in the suction line of pumps due to their low response pressure.

Nomenclature: Check valve


Design: Individual valve for in-line installation

P_{max}: 500 bar

Q_{max}: 15 ... 160 lpm



Basic types and general parameters

Basic type	Size	Flow Q _{max} (lpm)	Oper. pressure p _{max} (bar)	Connection thread (BSPP)	Symbol
B 1	- 1	15	500	G 1/4 (A)	
	- 2	20		G 3/8 (A)	
	- 3	30		G 1/2 (A)	
B 2	- 4	45		G 3/4 (A)	
B 3	- 5	75		G 1 (A)	
	- 6	120		G 1 1/4 (A)	
	- 7	160		G 1 1/2 (A)	

Additional versions

- Version with open-up pressure 3 bar

Order examples

B 1 - 2

Check valve type B,
housing design 1, size 2

B 3 - 5

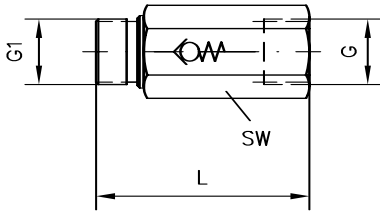
Check valve type B,
housing design 3, size 5

B 2 - 4

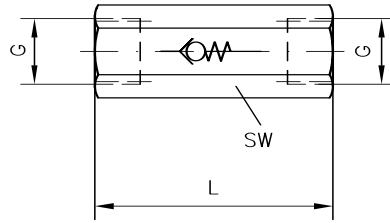
Check valve type B,
housing design 2, size 4

Dimensions

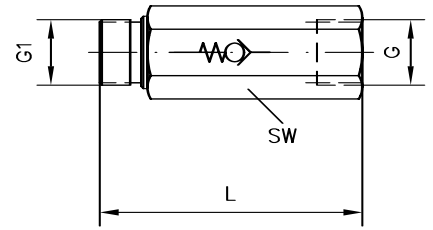
Type B1 - ..



Type B2 - ..



Type B3 - ..



All dimensions in mm, subject to change without notice!

Basic type	Size	L	SW	G (BSPP)	G1 (BSPP)	m (kg)
B 1	- 1	50 ... 60	a/f 19	G 1/4	G 1/4 A	0.11
	- 2	58 ... 67	a/f 24	G 3/8	G 3/8 A	0.16
	- 3	60 ... 66	a/f 27	G 1/2	G 1/2 A	0.19
B 2	- 4	70 ... 78	a/f 36	G 3/4	G 3/4 A	0.36
B 3	- 5	94 ... 114	a/f 41	G 1	G 1 A	0.65
	- 6	110 ... 130	a/f 55	G 1 1/4	G 1 1/4 A	1.3
	- 7	115 ... 136	a/f 60	G 1 1/2	G 1 1/2 A	1.5

Further information

- Check valves type B D 1191
- type RE D 7555 R
- type RC D 6969 R
- type RK, RB D 7445
- See also section "Devices for special applications" (Devices for up to 700 bar)
- For page and section of the devices additionally listed, see type index